

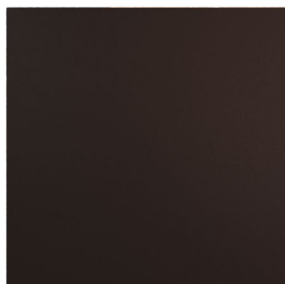
Reverberation Control Panel

CATS-REV-CP-12

Install Instructions



**Complete Acoustic
Treatment System**



Required materials – not included

1. Optional - 3.5 x 25mm bugle head black drywall screw (1 per panel)



CRITICAL NOTE ON TEMPERATURE

The adhesive used on the panel is temperature sensitive and will only operate normally when raised to temperatures above 18 degrees C (65 degrees Fahrenheit). For best results the panels should have been brought to this temperature at least 24 hours prior to install.

Attempting to install panels which have not been brought to temperature will reduce the short and long term effectiveness of the adhesive.



STEP 1 - PREPARATION

Surfaces where panels will be installed must be clean with no dust or debris which may interfere with the installation. We recommend using a damp cloth or decorators wipe to ensure that the area is free of surface dust.



STEP 2 - LAYOUT

Mark out where the panels will be installed. Pay attention for obstructions that may interfere with your planned layout.

C-ATS is designed to be a flexible and forgiving solution. Panels can be moved as much as 300mm (12") without major impact on the performance. It is easier and better to move a panel than to cut the panel wherever possible.



Reverberation Control Panel

CATS-REV-CP-12

Install Instructions



**Complete Acoustic
Treatment System**

STEP 3 – FIX WITH ADHESIVE PANEL BACKING LAYER

Each panel is supplied with the adhesive backing layer pre-applied. Care should be taken when removing the backing paper to ensure that the adhesive is not removed also.

With the backing paper removed the panel should be positioned then firmly pressed against the wall and then held in place for a few seconds to allow the adhesive to properly bond with the surface. Ensure that pressure is applied to all parts of the panel.



STEP 4 - OPTIONAL - FIX WITH SCREWS

When the panels have been brought properly up to temperature, the adhesive forms a strong and permanent bond. The presence of dust or low temperatures will reduce the effectiveness of the adhesive in both the short and long term.

Fixing the panel with a single drywall screw has proven an invisible, reliable and permanent insurance against the adhesive bond failing over time.

Once the panel has been fixed to the surface with the backing adhesive a single 25mm drywall screw should be driven 2/3rds of the way through the centre of the panel. This creates a visible "dimple" in the panel surface. Reverse direction to unscrew the fixing slightly and the "dimple" will raise back up to become invisible.

