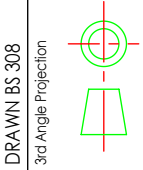


IF IN DOUBT, ASK.

A3 DRG. No.

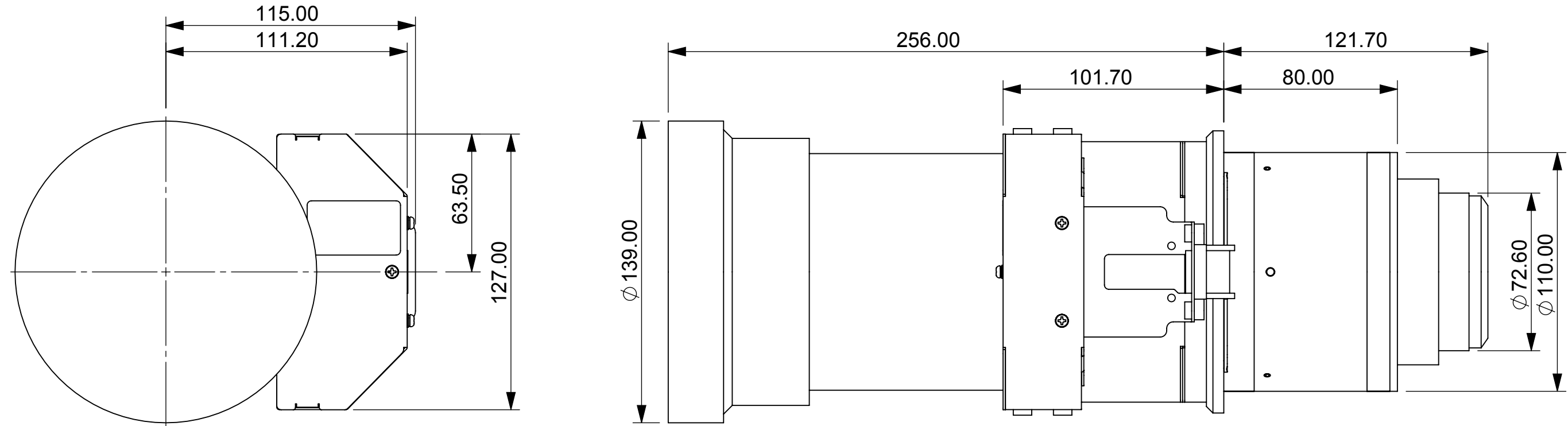
PROPRIETARY INFORMATION
This document contains proprietary information which is forwarded to you in confidence for a specific purpose. It shall not be reproduced nor transferred to other documents nor disclosed to others, nor used for manufacturing or any other purpose without the prior written permission of Digital Projection Ltd. It shall be returned immediately upon request.



DRAWN BS 308
3rd Angle Projection

Distribution Code

Last Change



ITEM NO.	QTY.	PART NO	DESCRIPTION	REVISION
1	1	109-375	LENS, 1.26-1.61-1 SX+ , 1.16-1.49-1 1080P	A
2	1	3450208400	LENS ADAPTOR COLLAR ASSY	01
4	1	120-245	BRACKET ASSY, MOTOR CONNECT	B
5	1	120-247	COVER, MOTOR A, PAINTED	B
6	3	3105453600	SCREW, M3x6, POZI PAN, S+P ZN BLK	01
7	1	112-695	LABEL, ZOOM LENS, 1.16-1.49-1 WUXGA-4K-UHD	C
8	1	106-984	PLATE, LENS INDEX	B
9	2	106-986	SCREW M2x5 POZI CSK HD	A
10	3	106-985	SCREW M3x4 SKT SET, CUP POINT	A
11	2	111-717	SCREW, M3X6 POZI CSK ST ST, BLACK	A

ITEM	DESCRIPTION	REFER TO	No Off	REMARKS
3				
2				
1				
MATERIAL		FINISH		
CODE				

TOLERANCES UNLESS OTHERWISE STATED		CAD GENERATED DRAWING. DO NOT MAKE MANUAL CHANGES		FIRST USED ON	
METRIC: 1.000 = ±0.01 1.00 = ±0.1 1.0 = ±0.2 1 = ±0.4		UNLESS OTHERWISE STATED REMOVE ALL BURRS & SHARP EDGES. DO NOT SCALE DRAWING THE SURFACE TEXTURE ROUGHNESS NUMBER OF MACHINED SURFACES SHOULD BE EQUAL TO OR LESS THAN 0.8µm (N6 CLA32)		DIMENSIONS IN MILLIMETRES	
IMPERIAL: Fractional ±1/64" Decimal ±0.005"		REV. B		ORIGINAL SCALE 1:2	
ANGLES ±0° 30'		NOTE		DRAWN J.C	
		DRAWN J.C		APP.ENG.	
		APP.DO.		DATE 20-10-09	
		DATE 27-09-19			



TITLE	COMPONENT OR DRG.No.
LENS ASSEMBLY, 1.26-1.61:1 SX+ / 1.16-1.49:1 1080P	109-236
A3:SHEET	1 OF 1