

MODEL XL-85 DIAGRAM PRIMARY CABINET DIMENSIONS

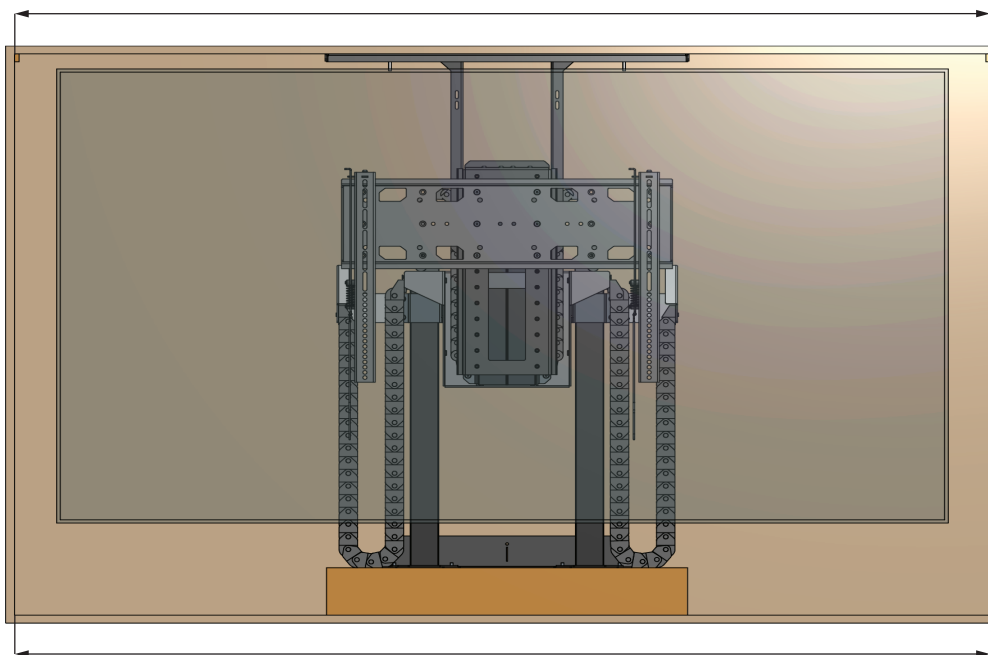
SPECIFICATIONS (CENTIMETERS ARE REPRESENTED BY [])

MAX TV SIZE : 86"
 MAX WEIGHT CAPACITY : 175 LBS [79.4 KG]
 MAX TRAVEL [EXTENSION] : 65" [165.1]
 LIFT SYSTEM HEIGHT : 39.25" [99.7] TO 53.875" [136.8]
 MAX TV HEIGHT : 64" [162.6] MINUS LID THICKNESS

QUICK REFERENCE DIMENSION GUIDE (USE WHICHEVER IS GREATER)

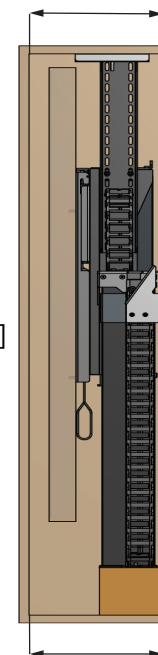
TV DIMENSIONS : W____, H____, D____
 MIN. INTERIOR CABINET WIDTH : $W + 2" [5.1] = \text{____}$ OR 32.5" [82.6]
 MIN. LID CUTOUT WIDTH : $W + 2" [5.1] = \text{____}$ OR 32.5" [82.6]
 MIN. INTERIOR CABINET HEIGHT : $H + 3" [7.6] = \text{____}$ OR 39.375" [100]
 MIN. INTERIOR CABINET DEPTH : $D + 7.625" [19.4] = \text{____}$
 MIN. LID CUTOUT DEPTH : $D + 7.625" [19.4] = \text{____}$
 PLATFORM HEIGHT : INTERIOR CABINET HEIGHT MINUS 53.375" [135.6]

MIN. LID CUTOUT WIDTH = TV WIDTH + 2" [5.1] OR 32.5" [82.6]
 WHICHEVER IS GREATER



MIN. INTERIOR CABINET WIDTH = TV WIDTH + 2" [5.1] OR 32.5" [82.6]
 WHICHEVER IS GREATER

MIN. LID CUTOUT DEPTH =
 TV DEPTH + 7.625" [19.4]



MIN. INTERIOR CABINET DEPTH =
 TV DEPTH + 7.625" [19.4]

MIN. INTERIOR CABINET HEIGHT =
 TV HEIGHT + 3" [7.6] OR 39.375" [100]
 WHICHEVER IS GREATER

PLATFORM HEIGHT =
 INTERIOR CABINET HEIGHT
 MINUS 53.375" [135.6]
 IF LESS THAN ZERO A
 PLATFORM IS NOT REQUIRED

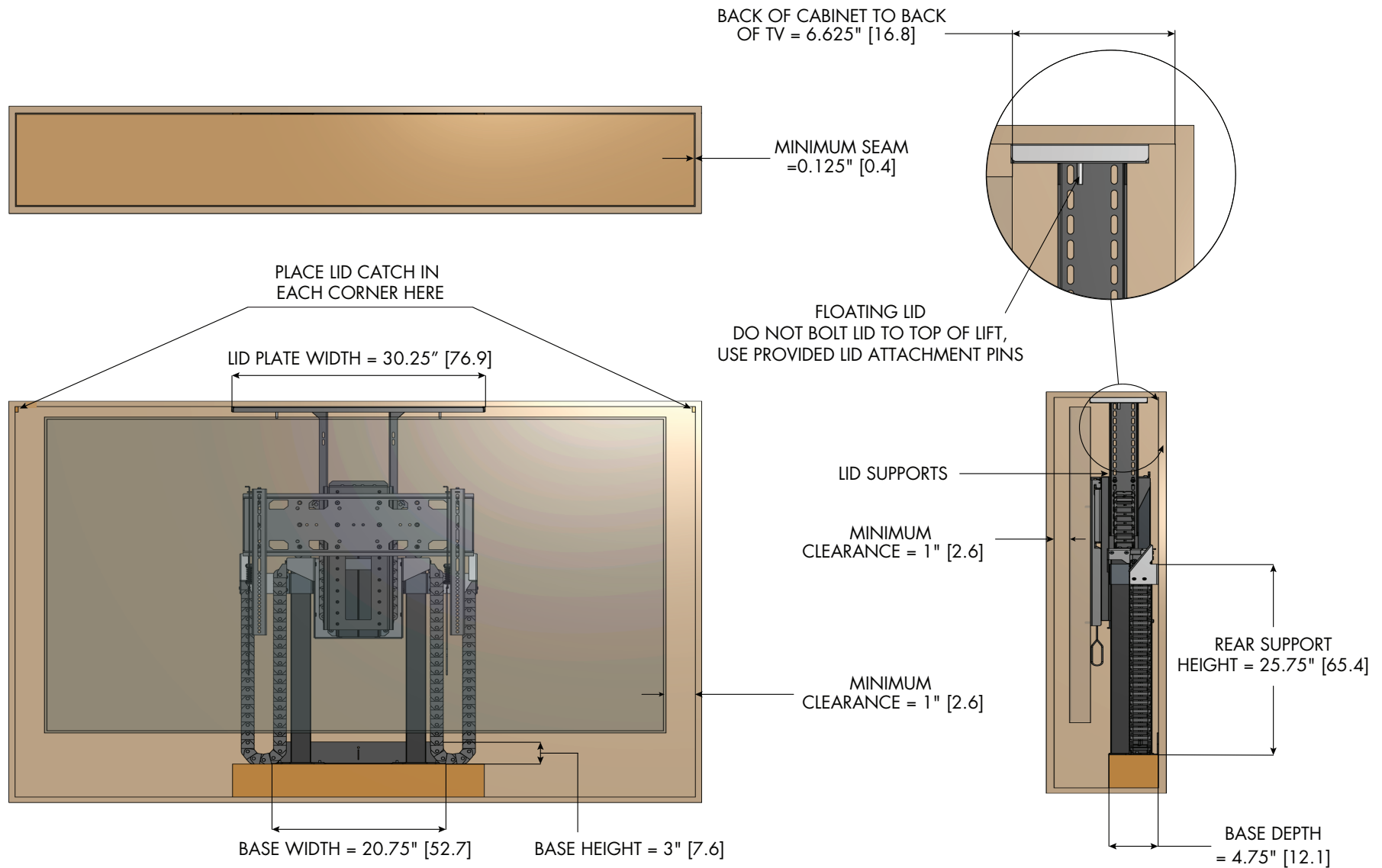
NOTES:

1. THE CABINET BOX SHOWN IN THE DIAGRAM IS FOR REFERENCE ONLY AND IS NOT PROVIDED WITH THE LIFT SYSTEM
2. WHEN DETERMINING TV HEIGHT, ALWAYS USE MANUFACTURER SUPPLIED "TV WITHOUT STAND" HEIGHT
3. LIFT MECHANISM IS POWDER COATED BLACK STEEL, COLORS IN DIAGRAM ARE FOR CLARITY ONLY
4. LIFT ENCLOSURE'S REAR PANEL SHOULD BE CONSTRUCTED TO WITHSTAND A HORIZONTAL LOAD OF 600 LBS [272.2 kg] OR MORE

NEXUS 21

COPYRIGHT 2020 - ALL RIGHTS RESERVED
 UPDATED 9/2/20

MODEL XL-85 DIAGRAM CABINET REFERENCE DIMENSIONS



NOTES:

1. LID SUPPORTS ALLOW LID PLATE TO BE ADJUSTED FLUSH WITH UNDERSIDE OF LID
2. LID ATTACHMENT PINS ALLOW LID TO FLOAT WITH THE USE OF LID CATCHES
3. MINIMUM SEAM CAN BE REDUCED TO 0.0625" [0.2] WITH A 45 DEGREE BEVEL ON THE EDGES OF THE LID

NEXUS₂₁

COPYRIGHT 2020 - ALL RIGHTS RESERVED
UPDATED 9/2/20