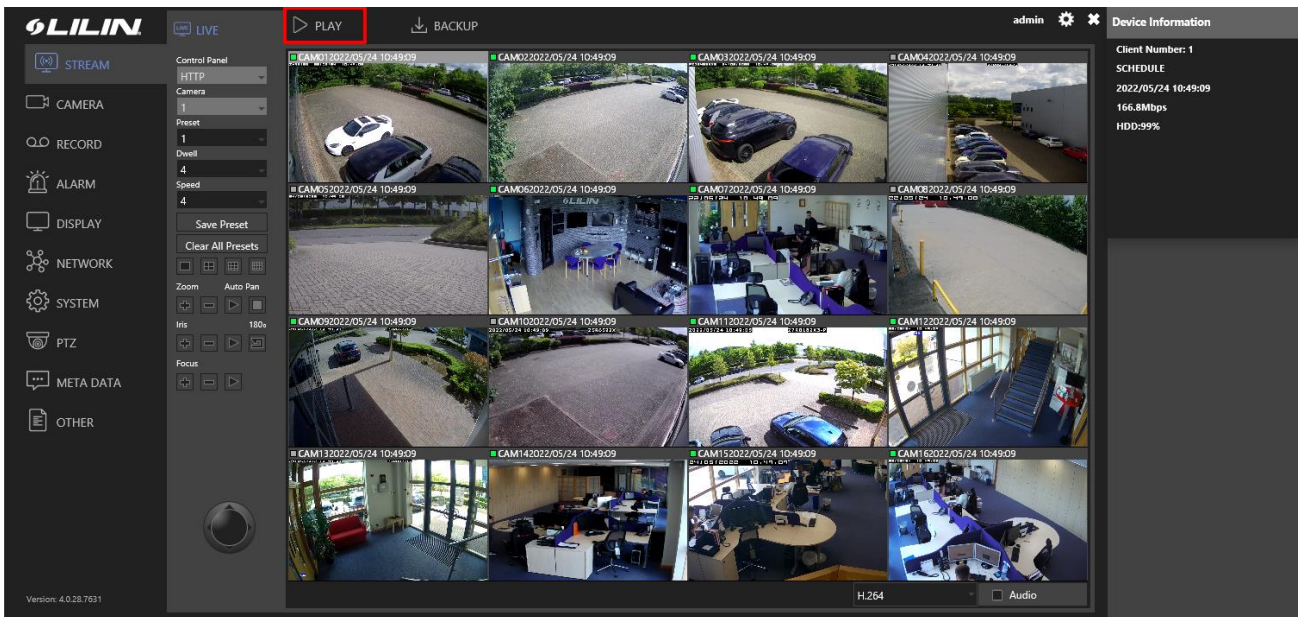
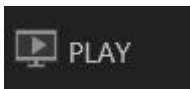


# NVR Web Browser Playback and Backup Guide

## Playback Guide

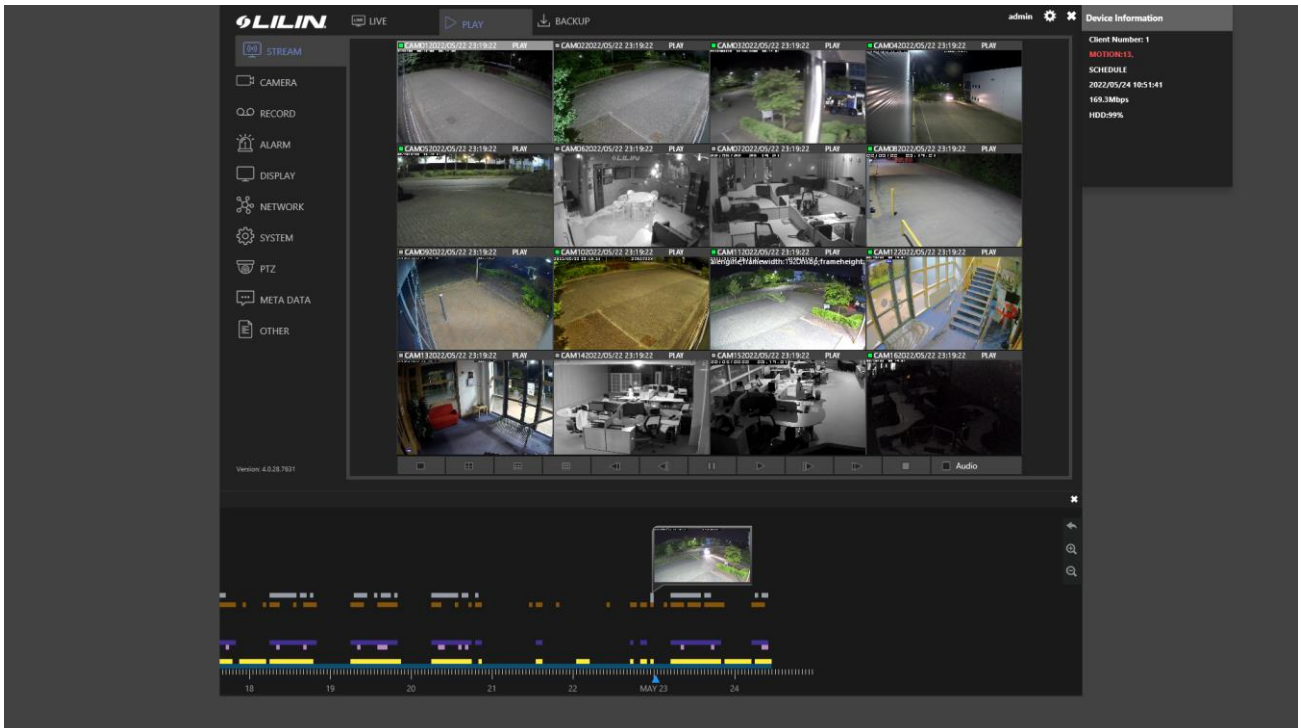
First, log in to the NVR's web browser using either Internet Explorer 11 or Chrome.  
(In this guide we will be using IE11).

You will see a 'Play' option at the top of the screen, click this.



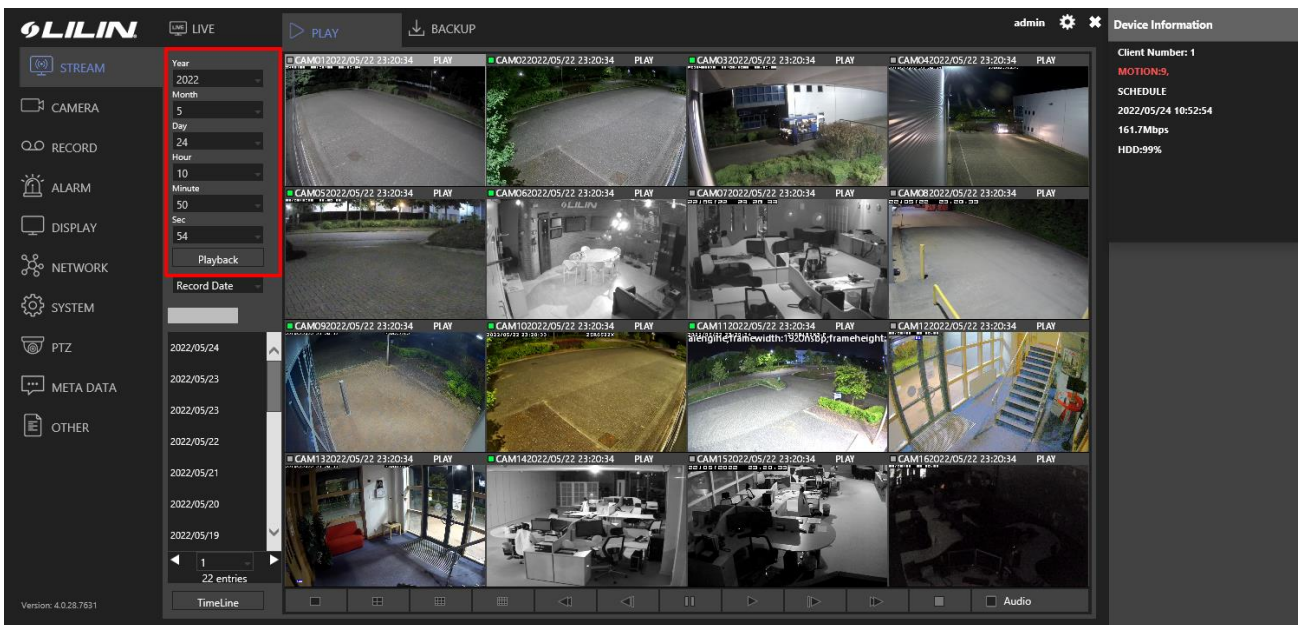
The 'Play' screen will now load.

You have 2 options for searching the recorded video. One is to use the timeline displayed at the bottom of the screen. To use this simply click on the part of the bar that corresponds to the time you would like to playback.



Alternatively click the X in the top right-hand side of the timeline and a manual select time option with dropdown bars will appear to the left of the video window.

Simply adjust the values to the time and date you wish to review and click the 'Playback' icon.



When playback starts you can change the window view and control playback speed, fast forward etc using the icons at the bottom of the screen.





Use the calendar to select the required day for your video backup. Also enter the required start and end time for your video clip.

The 'Date / Time' selection interface includes a calendar for the month of May 2022. The date '24' is highlighted. Below the calendar, there are dropdown menus for 'Start Time' and 'End Time', both set to '2022-5-24 10:56:55'.

Next select the camera you want to include in your backup.

The 'Channel' selection interface shows a grid of 32 camera channels, each with a checked checkbox. A 'Select/Clear All' button is located at the bottom of the grid.

The final step will be to select which video format you want to use.

The 'File Format' selection interface shows a list of video formats: 'Multi-view SD', 'Multi-view HD( 4CH )', 'SD AVI', 'HD AVI', 'SD MP4', and 'HD MP4'. The 'Multi-view SD' option is currently selected. A 'Cancel' button is visible to the right of the list.



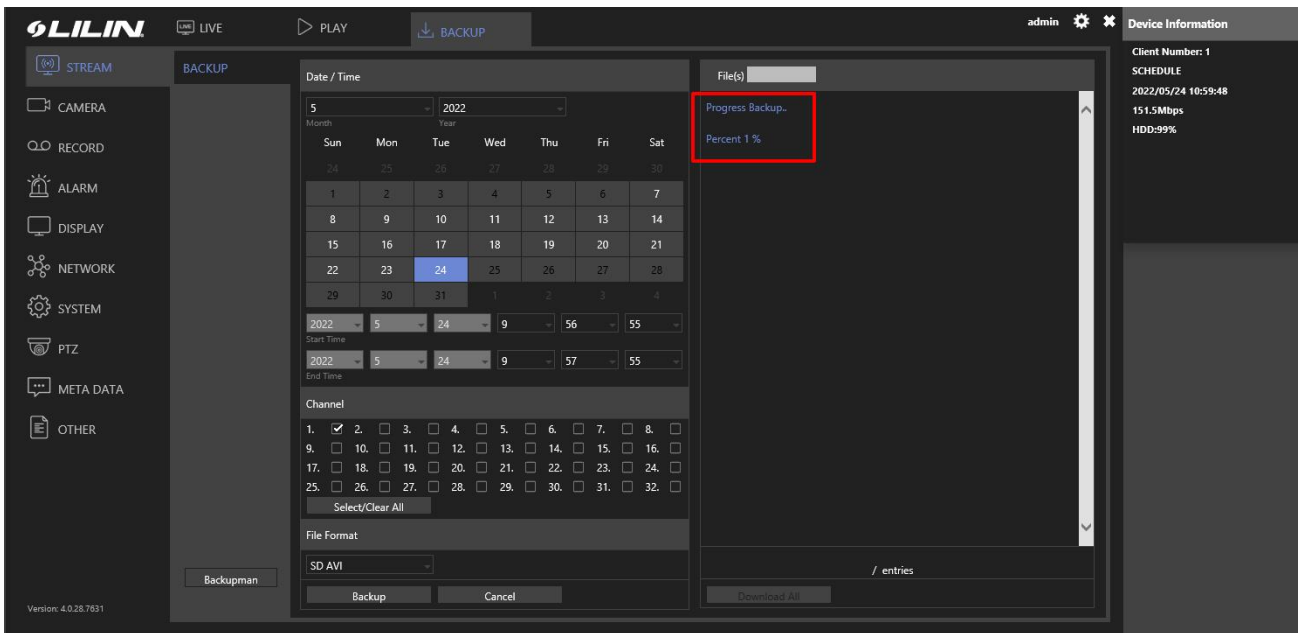
The options to choose from are displayed above.

Information about each file format can be found on the last page of this document.

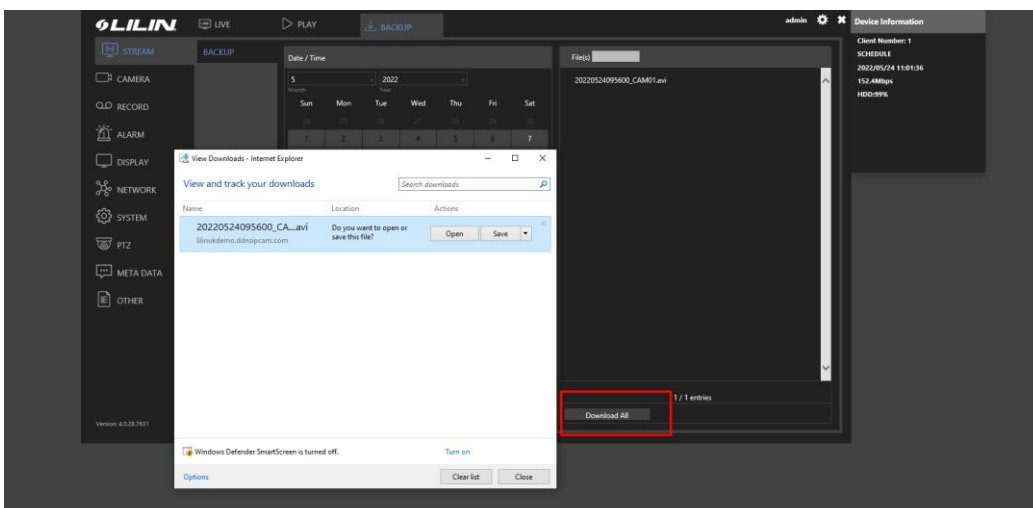
Then click Backup



Once the Backup button is pressed the backup process will start. You will see a progress indicator in the right-hand column on the screen.



Once the backup has completed, you will see the name of the video files created. To download them simply click on the entries in this section and your browser will start to download them.



## File Formats Explained

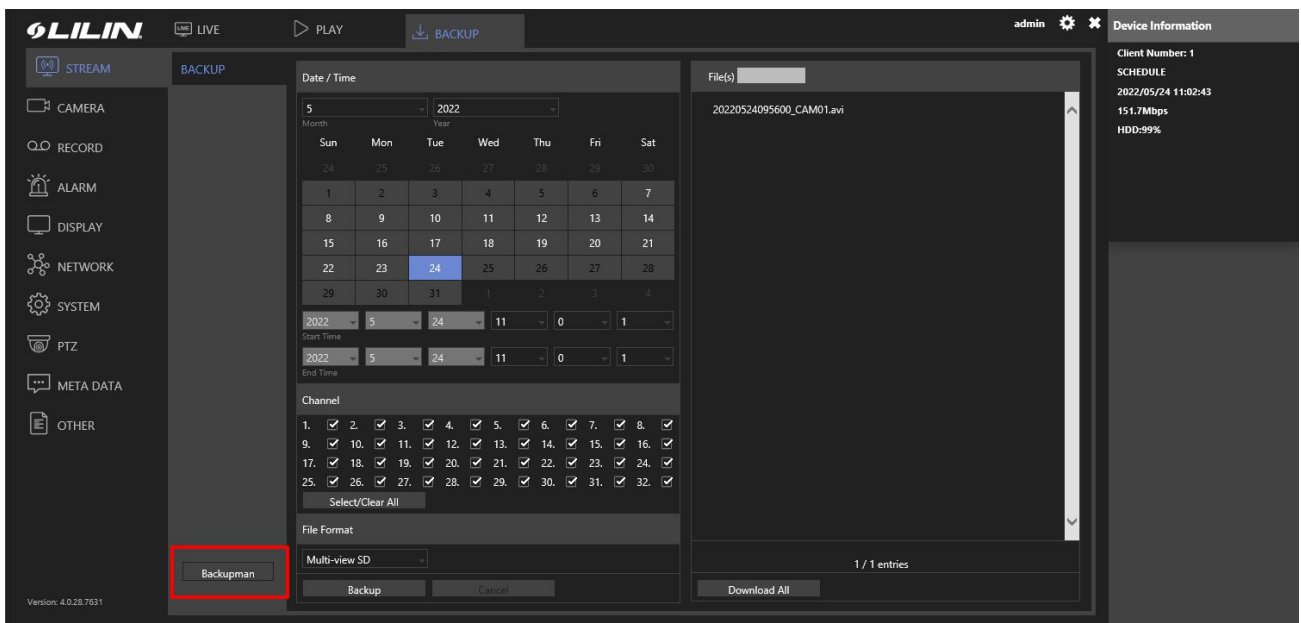
### SD H.264 Raw Data

This option uses a standard definition LILIN proprietary file type which is locked and cannot be edited. This option will allow multiple channels to be displayed concurrently on playback but will require the backed up file to be played using 'Backup Manager'.

### HD H.264 Raw Data

This option uses a high definition LILIN proprietary file type which is locked and cannot be edited. This option will allow multiple channels to be displayed concurrently on playback but will require the backed up file to be played using 'Backup Manager'.

Backup manager can be downloaded from the Backup screen on the NVR as shown below.



### SD H.264 AVI

This option will backup video using the .avi file format in standard definition. The .avi format is a generic video format that can be played back using generic media playback software such as VLC or windows media player (If the correct codec is installed). This file format will provide each camera selected during the backup process as an individual .avi file.



## **HD H.264 AVI**

This option will backup video using the .avi file format in high definition. The .avi format is a generic video format that can be played back using generic media playback software such as VLC or windows media player (If the correct codec is installed). This file format will provide each camera selected during the backup process as an individual .avi file

## **Which backup format should I use?**

If you are an unexperienced PC user, the .avi file format is considered the best option for your backup file format. If you are an experienced PC user, it is recommended to use the RAW file formats.

### **Apple Mac Users**

If you are using an Apple Mac, it is recommended to use the .avi backup method. Backup Manager is required to play videos backed up using the RAW file format. Unfortunately, Backup Manager is not supported by OSX operating systems, so playback of video the RAW video files will not be possible unless a Windows PC is used.